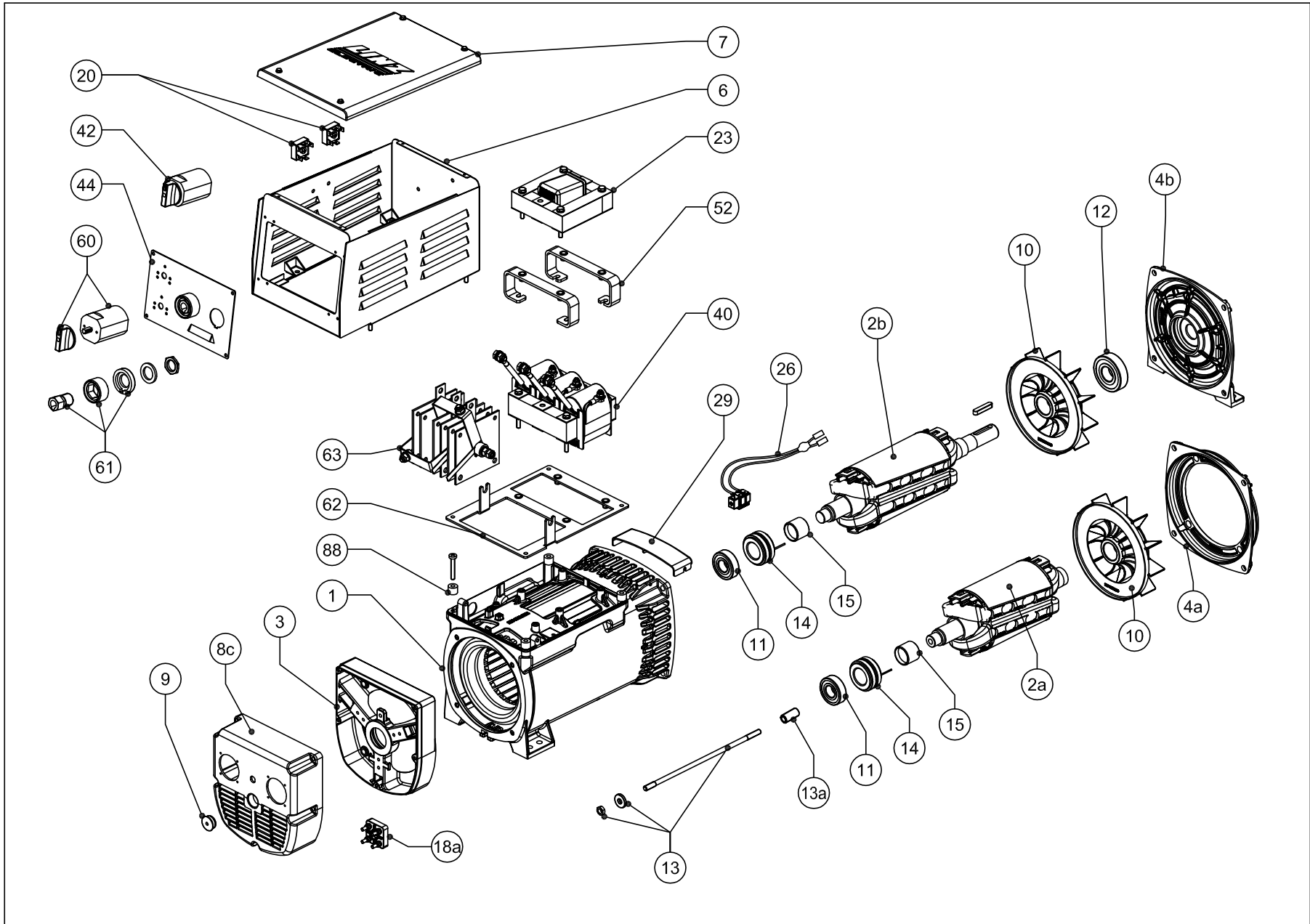


E2W10 220DC-K



no.	CODICE CODE	LISTINO RICAMBI E2W10 DC-K	SPARE PARTS PRICE LIST E2W10 DC-K	LISTA DE PRECIOS REPUESTOS E2W10 DC-K	PRIX PIECES DETACHEES E2W10 DC-K	EURO
1	*	CARCASSA CON STATORE	FRAME WITH STATOR	CARCAZA CON ESTATOR	CARCASSE AVEC STATOR	410,00
2	*	ROTORE FINITO	ROTATING INDUCTOR	IND. ROTANTE	RUE POL.	239,00
2	*	DIFFERENZA PER B14	OVERPRICE B14	SOBREPRECIO B14	SURCHARGE B14	19,00
3	E10SE001A	SCUDO POSTERIORE B9 ALTO	B9 REAR SHIELD	ESCUDO POSTERIOR B9	FLASQUE ARRIERE B9	14,60
4a	E10SB003B	SCUDO ANTERIORE d.105 C23-C30	d.105 C.23 - C30 FRONT SHIELD	ESCUDO ANTERIOR d.105 C.23 - C30	FLASQUE AVANT d.105 C.23-C30	11,3
4a	E10SB005B	SCUDO ANTERIORE d.146 J609b	d.146 J609B FRONT SHIELD	ESCUDO ANTERIOR d.146 J609B	FLASQUE AVANT d.146 J609B	12,3
4a	E10SB009B	SCUDO ANTERIORE d.41.25 J609a	d.41.25 J609A FRONT SHIELD	ESCUDO ANTERIOR d.41.25 J609A	FLASQUE AVANT d.41.25 J609A	15,2
4b	E10SB001B	SCUDO ANTERIORE B3/B14	B3/B14 FRONT SHIELD	ESCUDO ANTERIOR B3/B14	FLASQUE AVANT B3/B14	28,2
6	E10BT099DSV	SCATOLA BASETTA	TERMINAL BOX	CAJA DE BORNES	BOITE A BORNE	44,00
7	E10BT099DCV	COPRISCATOLA BASETTA	TERMINAL BOX COVER	TAPA CAJA DE BORNES	COUVERCLE BOITE A BORNE	15,90
8a	E10KA008C	PROTEZIONE POSTERIORE	DRILLED REAR COVER	TAPA POSTERIOR TRABAJADA	COFFRET ARRIERE PERCEE	5,60
8c	*	PROTEZIONE POSTERIORE FORATA	DRILLED REAR COVER	TAPA POSTERIOR TRABAJADA	COFFRET ARRIERE PERCEE	6,30
9	C10KA010A	TAPPO POSTERIORE	REAR PLUG	TAPON	BOUCHON POSTERIEUR	0,43
10a	E10VE000B	VENTOLA D.30	FAN	VENTILADOR	VENTILATEUR	4,43
10b	E10VE001A	VENTOLA D.34	FAN	VENTILADOR	VENTILATEUR	15,76
11	EX411434320	CUSCINETTO POSTERIORE	REAR BEARING	COJINETE POSTERIOR	ROULEMENT ARRIERE	4,70
12	EX411465325	CUSCINETTO ANTERIORE	FRONT BEARING	COJINETE ANTERIOR	ROULEMENT AVANT	9,70
13	*	TIRANTE + DADO + RONDELLA C.23	TIE ROD + NUT + WASHER	VARILLA CENTRAL + ARENELA + TUERCA	TIRANT CENTRAL + RONDELLE + TIGE	4,00
13a	E10TK020A	BUSSOLA TIRANTE CENTRALE PER C.30	BUSH THREADED	ANILLO VARILLA CENTRAL	DOUILLE TIRANT CENTRAL	4,9
14	E10KA000A	COLLETTORE A 2 ANELLI	SLIP RING	COLECTOR DE ANILLOS	COLLECTEUR A DEUX BAGUES	17,20
15	E10KA015A	BUSSOLA ISOLANTE	ISOLATING BUSH	ANILLO AISLADOR	DOUILLE ISOLANTE	0,80
18a	E10KA012A	MORSETTIERA 4 POLI	4 STUD TERMINAL BOARD	BORNERA 4 TERMINALES	BORNIER A 4 BORNES	4,80
20	EX541802080R	PONTE A DIODI TRIFASE	THREE PHASE BRIDGE	PUNTE RECTIFICADOR TRIFASICO	PONT REDRESSEUR TRIPHASE	28,00
23	E10TAS220DCK1	COMPOUND 1 COLONNA	COMPOUND	COMPOUND	COMPOUND	70,00
26	E10KA002A	PORTASPAZZOLE COMPLETO	COMPLETE BRUSH HOLDER	PORTAESCOBILLAS COMPLETO	PORTE-BALAIS COMPLET	16,90
29	E10KA016B	PROTEZIONE ANTERIORE IP21	IP21 PROTECTION	PROTECCION ANTERIOR IP21	PROTECTION IP21	1,20
40	EYINDU2W00	INDUTTANZA	INDUCTANCE	INDUCTOR	INDUCTANCE	195,00
42	EXCOMSA16A6PM45	COMMUTATORE 6 POSIZIONI	6 POSITIONS SWITCH	CONMUTADOR 6 POSICIONES	COMMUTATEUR 6 POSITIONS	23,00
44	E10BT068BV220DCK1	PANNELLO SALDATRICE DC	WELDER PANEL	PANEL SOLDADORA	TABLEAU SOUDEUSE	10,50
52	E10KA172B	SUPPORTO COMPOUND	COMPOUND BRACKET	SUPORTE COMPOUND	SUPPORT COMPOUND	4,90
60	EXCOMSA16A4PM45	COMMUTATORE 4 POSIZIONI	4 POSITIONS SWITCH	CONMUTADOR 4 POSICIONES	COMMUTATEUR 4 POSITIONS	20,00
61	EYPRSD3860259RD	PRESE DINSE	FEMALE WELDING TERMINAL	BORNE HEMBRA DE SOLDADURA	BORNE DE SOUDAGE	7,20
62	E10BT100C	PIASTRA SALDATRICE DC	DC STEEL PLATE	PLANCHA SOLDADORA	PLAQUE SOUDEUSE	23,30
88	E00ZF315A	DISTANZIALI CILINDRICO d.15x6 H12	SPACER	ARANDELA DE SEPARACION	RONDELLE D'EPaisseur	4,00

- \* Specificare codice dell'alternatore e data di produzione
- \* Specify alternator's code and date of production
- \* Precisar codigo del alternador y fecha de production
- \* Specifier code alternateur et date de production

